

## The Garden Gallery

12 - 16 March  
19 March - 6 April  
9 - 20 April  
23 April - 5 May

Isleworth Art for All  
Bernadette Collins  
Zafar Rizvi  
Hounslow Adult  
Education Artists  
Olivier Jamin  
Colin Kendall  
West Thames College  
Julia Gadd  
Ewa Czarniecka  
London Voices  
Take Four  
Les Parrott  
Subject to Change  
Diane Church

7 - 18 May  
21 May - 1 June  
4 - 15 June  
18 - 29 June  
2 - 13 July  
16 - 27 July  
30 July - 17 August  
20 - 31 August  
3 - 14 September  
17 September -  
5 October  
8 - 19 October  
22 October - 2 November  
5 - 30 November

Steve Letchford  
Marianne Johns  
Breathing Spaces



Bernadette Collins

For more information please contact the  
Arts Officer - Tel: 020 8232 5052  
Fax: 020 8232 5080

## The Jersey Galleries

Opened in 1995, the Jersey Galleries have established themselves as a significant part of the West London art scene. Located in the servants' quarters of Osterley Park House, the Galleries not only provide a unique compliment to this spectacular historic property but merit a visit in their own right.

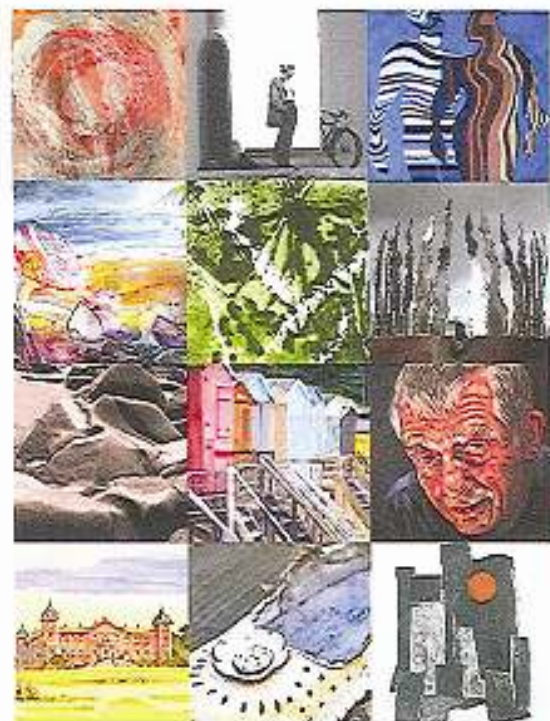
### How to find us

Osterley Park is accessible by road and rail. By car, follow the A4 and turn off at Thornbury Road, Isleworth, which leads to the main gate. By train, it is a short walk from either Osterley station on the Piccadilly line or Isleworth mainline station.



The Jersey Galleries  
Osterley Park and House, Jersey Road  
Isleworth, TW7 4RB  
[www.nationaltrust.org.uk/osterley](http://www.nationaltrust.org.uk/osterley)  
reg. charity no. 205846

THE NATIONAL TRUST



THE JERSEY GALLERIES

### 2008 Programme

12 March -  
2 November  
Wednesday - Sunday  
& Bank Holidays

1 - 4.30 pm

FREE ADMISSION



Ray Ward; from the show Ward Goodden Hardy Vines

## Exhibitions

### Hounslow Art Teachers

19 - 30 March

A group exhibition celebrating the personal creativity of a selection of the borough's art teachers, demonstrating professional talent in a variety of media.

### NSPSP

9 - 27 April

The renowned National Society of Painters, Sculptors & Printmakers have held annual exhibitions since the 1930s and return to Osterley by popular demand.

### Modus Embroidered Textiles

30 April - 11 May

The group formerly known as Opus demonstrate an expert handling of both traditional textiles as well as new and experimental techniques including embroidered books.

### Chandos Art & Crafts

14 May - 1 June

Chandos return to Osterley with their incredible variety of work, from painting, sculpture and jewellery to bookbinding, woodturning and calligraphy.

### Westlondonartists

4 - 15 June

A diverse group of artists from all over west London and the south east, westlondonartists are brought together via workshops, projects and exhibitions.

### Worples Primary School

18 - 29 June

Students have created a mixed media exhibition, exploring themes of art, history, citizenship and geography at Osterley Park and House. Supported by the MLA Teacher Placement Scheme.



### Four Artists

2 - 13 July

A group of four young emerging artists present a broad spectrum of styles, including photography, painting, sculpture and installation art.

### School Arts Partnership

16 - 20 July

Students from Gumley House Convent School and St Paul's CE Primary School Brentford have worked together with Isleworth & District Embroiderers to explore Osterley Park House and create embroidered wall-hangings. This project is part of the Discovery package, supported by Sky.



### Hillingdon Artists Group

23 July - 3 August

An opportunity to see and buy art from this talented collective. A showcase of oils, water-colours, photography, prints and sculpture.



Arvydas Uziela

### Organic Distillations

6 - 17 August

A collection of two and three-dimensional work that explores organic form and our relationship with the natural world.

### Arvydas Uziela

20 - 31 August

A retrospective exhibition spanning 1990 to present day. Lithuanian-born Uziela explores identity in an international environment through abstract oil paintings and experimental graphics.

### Ways of Seeing

3 - 14 September

Three artists and two photographers from West London explore five different ways of representing landscape and people.

### Richard Wilde

1 - 12 October

A remarkable solo-show by portrait artist Wilde, showing a selection of works in pencil and oils.

### Ward Goodden Hardy Vines

15 - 26 October

Oil paintings, drawings in a variety of media, and printmaking including etchings and monoprints.